




LEGEND

-  **Bike Path Access Point**
-  **Bridge/Underpass**
-  **Convenience Store**
-  **Parking Area**
-  **Restaurant**
-  **Bike Lane/Paved Shoulder**
On major streets, bus and right turn lane shared with bicycles.
-  **Bike Path (Shared-use)**
Usually a paved path, separated from the street. Watch for pedestrians and dogs. Suitable for slower speeds.
-  **Bike Route**
On major and minor streets, popular recreational and commuting bicycle routes, shared with vehicles.
-  **Least Suitable**
Streets that are least suitable for shared bicycle/motor vehicle use.
-  **Most Suitable**
Streets that are most suitable for shared bicycle/motor vehicle use.

SUGGESTED RIDES

OVER & UNDER FAMILY RIDE 7 miles



A family friendly ride in which you'll experience two architectural points of interest—a tunnel and the award-winning Capital City Bridge.

THE ORCHARD RIDE 9.5 miles



A longer ride with Eplegaard as its midway point. Stop and relax at the old fashioned orchard and enjoy some fresh produce before you begin the ride back.

(see back for route details)

ANNUAL EVENTS

April

Capital City Jazz Fest
Mad City Velo Club Fitchburg
Criterium

May–October

Fitchburg Farmers' Market

May

Fitchburg Days Festival

June–August

Concerts at McKee Park

June

Festa Italia
Jodi Lou Lung Cancer 5K
Run/Walk

July

Hickory Knoll Carriage
Competition

August

Agora Art Fair
Du Run Run

September–October

Harold Potterson's
Haunted Barn

October

Great Halloween Hunt

November

Berbee Derby

for more information visit FitchburgChamber.com





OBEY TRAFFIC LAWS

Familiarize yourself with Wisconsin traffic laws. Remember, a bicycle is a vehicle and must obey all traffic rules and signs.

ALWAYS RIDE WITH THE FLOW OF TRAFFIC

Riding against traffic is unpredictable, especially to drivers at intersections, driveways, or in parking spaces.

WEAR A HELMET!

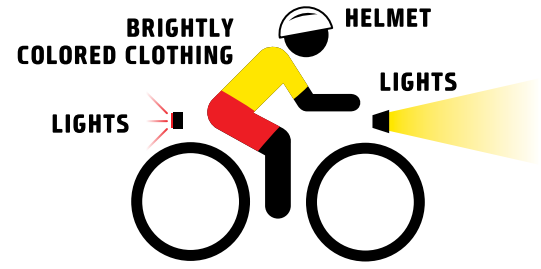
Equip yourself with a certified helmet of the proper size and fit.

RIDE AS NEAR AS PRACTICABLE TO THE RIGHT SIDE OF THE PAVEMENT

but at least three feet from parked cars. Situations when it is not practicable to ride on the right edge of the road include when preparing to make a left-turn, when passing another vehicle or bicyclist, or when necessary to avoid unsafe conditions. Always stay at least three feet from parked cars to avoid being hit by a suddenly opened car door.

EQUIP AND MAINTAIN YOUR BICYCLE PROPERLY

Make sure that brakes and other parts are in good working order. When riding after dark, you must use a white light visible at least 500 feet to the front, and a red reflector visible up to 500 feet in the rear.



BE VISIBLE AND DRESS APPROPRIATELY

Wear brightly colored clothing (with reflective patches at night), and carry a water-resistant jacket for protection from sudden changes in weather and temperature.

BE AWARE OF HAZARDS

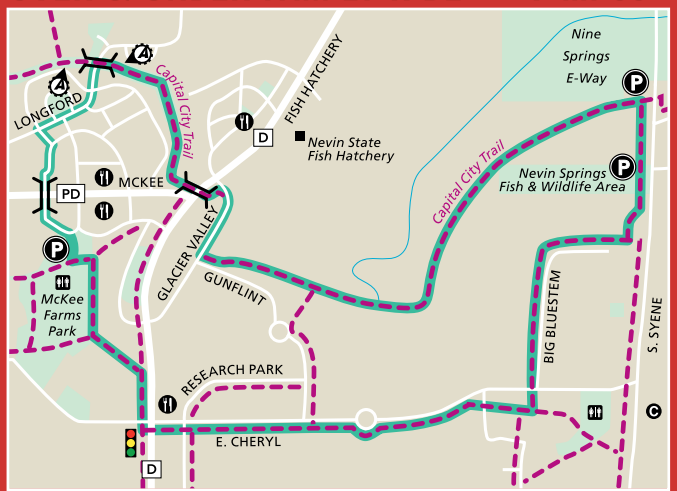
Watch the road ahead for surface hazards like broken glass, sand, tree branches, potholes, and railroad tracks. Watch for entering and turning traffic at intersections and driveways.

RESPECT THE RIGHTS OF OTHERS

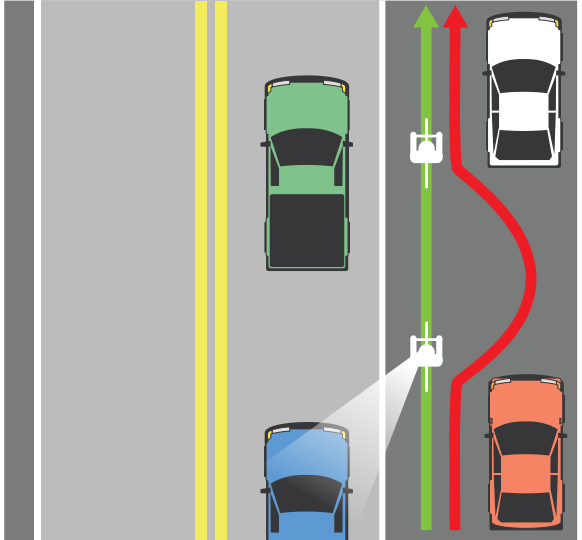
If you, as a bicyclist, want to earn the respect of motorists and pedestrians, then you need to respect their rights as well. Never compromise someone else's safety for your own convenience.

FREE • FREE
FITCHBURG, WI
BIKE MAP
your peddle power guide to the trails & roads in Fitchburg

OVER & UNDER FAMILY RIDE • 7 miles



This seven mile ride goes through a tunnel under McKee Road/Hwy PD and over Fish Hatchery Road on the Capital City State Trail Bridge. You'll wind your way past the Nevin State Fish Hatchery, through the Nine Springs environmental corridor, along the prairie grass-lined East Cheryl Parkway and into McKee Farms Park complete with restrooms, drinking fountains and the popular Kid's Crossing Playground.

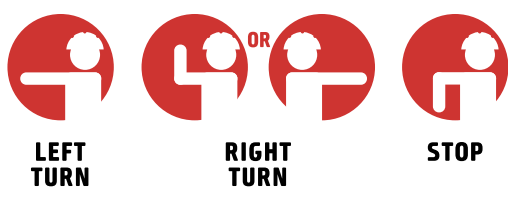


ALWAYS LOOK BEHIND YOU

Look over your shoulder before signaling or changing your position on the road.

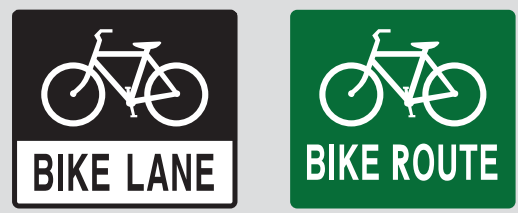
COMMUNICATE TO MOTORISTS & OTHER BICYCLISTS

Make eye contact and signal your turns and lane changes.



AVOID RIDING ON RURAL ROADS AT NIGHT

Rural roads are not lit up like streets in urban areas.



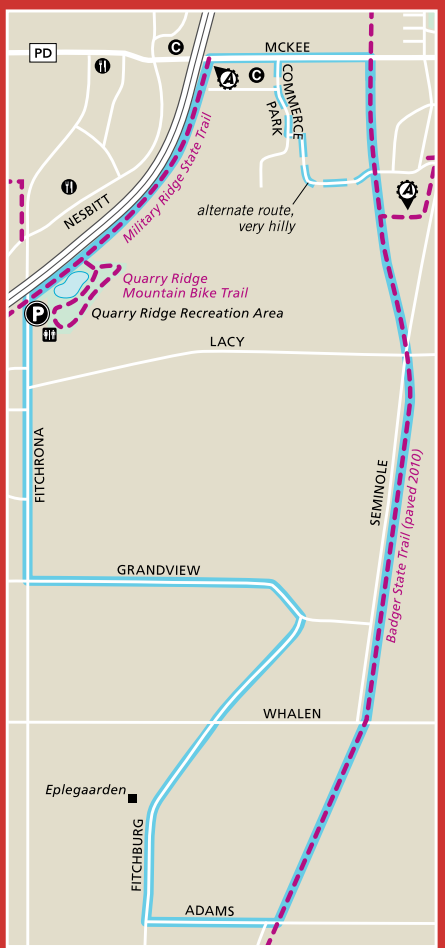
identifies bike-only lanes that are marked by pavement markings or signing

identifies a "preferred" route for bicyclists to use and provide directional guidance from local streets to McKee Farms Park, the City of Madison bike route system, and access to the Capital City State Trail

DISCLAIMER
The user of this map bears full responsibility for his or her own safety. The bicyclist assumes the risks encountered and is advised to use good judgment and obey traffic laws on all roads, regardless of their designation on this map.

THE ORCHARD RIDE • 9.5 miles

Start this ride at the Quarry Ridge Recreational Area by jumping onto the Military Ridge Trail. Head north to the McKee Road/Hwy PD intersection, continue east in bike lane on McKee. Head south on the Badger State Trail and take in the rural beauty of Fitchburg. Jump onto Adams Road then Fitchburg Road to find your way to the Eplegaard apple orchard. Continue on Fitchburg Road and Grandview Road to reconnect with the Badger State Trail and head back to the beginning!



STATE TRAIL PASSES

Trail passes are required for people ages 16 and older. DNR Service Centers sell stickers and trail passes. Here are two options for buying trail passes:

- Pay with MasterCard/Visa—call 266-2181 between 7:45am-4:30pm, Monday through Friday
- A self-registration station is available at the Capital City Trail and Highway 18/151

More information can be found at the DNR website at dnr.wi.gov



For additional copies of this map contact the Fitchburg Chamber of Commerce or Fitchburg City Hall
(608) 288-8284 • www.FitchburgChamber.com

ADDITIONAL BICYCLING INFORMATION

City of Fitchburg Transportation Engineer	270-4262
Dane County Parks Park Planner	224-3763
State of Wisconsin DOT Bike/Ped Coordinator	267-7757
DOT Bike/Ped Safety Program Manager	267-3154
DNR Regional Trail Coordinator	275-3302

